



## SHAKUNTALA HSES CONSULTING SERVICES

HEALTH, SAFETY &  
ENVIRONMENT SUSTAINABILITY

### OUR PROFILE

*Quality Solution driven services that enable efficient delivery of business products through integration of health, safety and environment Sustainability requirements in all operations.*



---

# Contents

Introduction

About us

Why Shakuntala HSES Consulting  
Services

Vision

Mission

What We Do

Contact Us



## Introduction

*Shakuntala HSES Consulting Services specializes in Occupational Health, safety and Environmental (HSE) Management solutions including development and implementation of Safety management system policies and procedures. The company prides itself with an industry knowledge and experience; reliability on service delivery and a one stop service on HSE management.*

We commit to enable business operations to detect, control and monitor potential risks in the workplace. Adopting a multifaceted approach in HSE practices, Shakuntala HSES Consulting Services invests in elevating and integrating HSE strategic solutions for the betterment of organizations.

In providing the HSE services to your company, Shakuntala HSES Consulting services will facilitate and support the identification and maintenance of the legal requirements. A unique and professional approach is adopted to ensure business realise product delivery with robust processes that promote integration of HSES management objectives.

# HEALTH SAFETY AND ENVIRONMENT SUSTAINABILITY



## About Us

Shakuntala HSES Consulting is spearheaded by an experienced and knowledgeable team of entrepreneurs with the goal of taking HSES to greater heights in India.

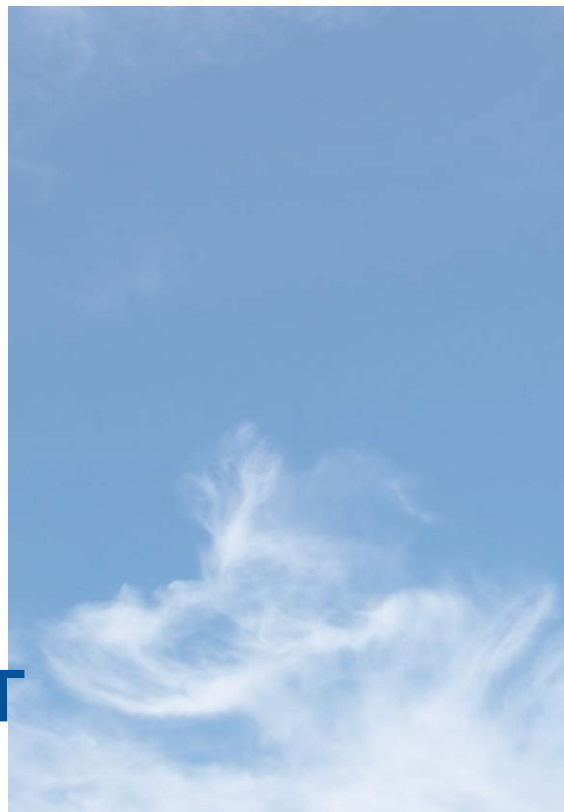


### HSES-Consultant

An accomplished, multifaceted, and solutions-focused leader in the Field of HSES with **20+ years' experience in occupational Health & safety management** system Implementation all over India. **Supports organizations to elevate and integrate safety as a strategic business priority** by providing guidance and direction to ensure that those involved in its operations do so in a safe, healthy, responsible, and acceptable manner. In- depth knowledge of developing and executing health and safety plans & agreements, in line with legal guidelines. **Collaborates with executives to ensure that leadership "buy- in" and ownership for safety engagements have a ripple effect in the organization.** Facilitates organizational safety risk assessments to evaluate, assess and recommend best practice to **enable organizations to synthesize and integrate results to eliminate or minimize safety risks.** Possesses a key strength in defining robust processes to **ensure the utmost integrity of safety data.**

## HEALTH SAFETY AND ENVIRONMENT SUSTAINABILITY

**Successful leadership experience** as a team builder and mentor who develops the talents of HSES professionals to deliver and perform to the highest quality standards. **An excellent relationship builder** who has triumphantly formed strong, sustainable relationships and who consistently secures consensus among cross-functional team members for key initiatives. A true professional who is willing to challenge the status quo and **improve existing standards.**



### RAJAT YADAV

### Non-Executive Director

RAJAT YADAV is a skilled and innovative entrepreneur with more than **8 years' experience in the field of engineering & Business Management.**

RAJAT is equipped to work with and bring together diverse factors in professional environments to **plan, create and implement objectives.**

He strives to encourage, transform and create professional opportunities for personal interests and organizational partners; to develop creative teams based on a strong sense of self, determination and means of overcoming challenges and to support sound leadership practices bridging the gap between strategy and functionality.

Rajat's Experience and expertise in Operations/Supply Chain/Strategic Projects/Business Management/Exploring New Technologies & Mobility solutions.



## Why Shakuntala HSES Consulting Services

- Industry experience on HSE requirements; interpretation; implementation and monitoring.
- Possesses the strength in facilitation and supporting of Leadership and HSE Office in change management process with regard to improvement initiatives “buy in” by respective workplace stakeholder “Walk the Talk” on matters related to HSE culture and expectations.
- Ensures the company HSE professionals are clear of management expectations and confident in supporting the business in the strides for Vision Zero Harm.
- Capacity to provide professional Health, Safety and Environmental resources to develop and / or implement HSE processes and provide comprehensive support in operational sites.
- Value for money service to maintain vision Zero Harm status.
- Our professional consultancy provides comprehensive solutions to support the different sectors.

## Vision

The vision of the Shakuntala HSES Consulting Services is to contribute in the achievement and maintenance of Zero Harm to people and environment at work in the Indian continent by influencing efficiency of business operations through integration of HSE processes in day to day and strategic activities using the consulting services to support, advise, coach, train and monitoring.

## Mission

The company was established to enable companies to break the HSE plateau to greater heights; support companies that are at HSE implementation stages; to support the Executives on Visible leadership and strengthen the capacity of HSE Professionals to support business.

- respond to business identified gaps that hinder them achieving or maintaining greater and sustained HSE performance.
- to ensure client satisfaction with the delivery of integrated and sustainable standards in Occupational Health, Safety and Environment services.
- to facilitate and support organisations to take HSE to greater heights.

## What We Do

Provisions of Management services on the following;

- Occupational Safety (OS)
- Occupational Health (OH)
- Environmental Management (EM)
- Provision of HSE Resources
- HSE legislative Compliance
- Safety Management System



## Occupational Health Services

We strive to implement proactive measures in prevention and management of occupational diseases by ensuring, facilitating and monitoring the following programmes (but not limited to):

**Medical Surveillance** - a planned programme of periodic examination (which may include clinical examination, biological monitoring or medical tests) of employees by an Occupational Health Practitioner or in prescribed cases, by an Occupational Medicine Practitioner

- **Pre-placement medical examination** - conducted prior to employment. It assists in ensuring that employees correctly placed according to their medical compatibility to the job.
- **Periodic health screening** - conducted periodically during the employee's stay with the organisation to monitor their health status and early detection of occupational and non-occupational disease and their management.
- **Transfer medical examination** - conducted when an employee is transferred to a new job to establish fitness for duty in his/her new position
- **Exit medical examination** - conducted when an employee leaves employment. This is to establish whether the employee was not adversely affected by work environment and ensure the employer has a record of the employee's health status when leaving the organization.
- **Chest X Ray Service** - the examination forms part of the periodic medical examination to assess the heart, lungs, bones, and check cavity especially for worker that are exposed to dust, asbestos, silica, granite cement, chemicals, and any other Exposure that can result in lung related diseases.

**Health Risk Assessment (HRA)** - a multidisciplinary approach in the development and a prerequisite for Medical Surveillance.





## Environmental Management Services

Shakuntala HSES Consulting Services specializes in environmental management services. Emphasis is on the provision of environmental awareness through legal compliance, environmental systems integration, and strategies to maintain natural habitats, landscapes and environmental integrity & Sustainability.

### Management Practices Include:

- Waste Management
- Integration of Environmental Systems
- Development of Environmental management Plan (EMP)
- Environmental Impact Assessment (EIA)
- Evaluation of Environmental Compliance
- Management of Sound Environmental Practices for Aquatic and Land Based Ecosystems

*Trust Shakuntala HSES Consulting Services to address your Occupational Health, Safety and Environment Sustainability requirements with efficiency, integrity and Quality service solutions.*

## Occupational Safety Management Services

**We strive to enable the business to proactively identify risks and place measures to prevent And / or minimize incidents through communication and implementation of requirements; awareness creation and monitoring. And following are the services but not limited**

- **Multidisciplinary Risk Assessment** - comprehensive study on weaknesses, strength, opportunities and organisational through line feedback including the business drivers; to proactively identify internal and external factors that pose a safety risk to operations.
- **HSE Site Management support** - comprehensive HSE site support through identification; awareness creation; implementation of processes for incident prevention, monitoring and reporting.
- **Coaching Safety Professionals** - leveraging on vast experience the Shakuntala HSES Consulting Services possess to share and provide support to the Professionals for effective safety compliance drive, buy in by workplace stakeholders so they confidently support and guide the business to meet the safety objectives.
- **Safety related motivational speaking** - a presentation to facilitate commitment (or recommitment) by the organisation on 'why safety in our work place' The Shakuntala HSES Consulting services will leverage on personal experience that applies to the organisational line that is; from Executives to the front- line employee including service providers and Safety Professionals.
- **Through Organisational Line Safety Conversation** - a facilitated conversation to ensure the beliefs, values and expectations are aligned from top to bottom of the organisational line.
- **Safety Strategy / Operational Plan** - facilitate the development of the safety medium or long-term plan, plan change management strategies and facilitate the development of tracking and monitoring tools to ensure thorough implementation and review.
- **SHE files development** - development of risk-based plan informed by the scope of work and any other external factors that will pose a risk or opportunity to the business operation.
- **Occupational Hygiene Monitoring** - conduct surveys (Noise, Illumination, Ventilation, Indoor Air quality, Thermal Comfort, and Ergonomics) in accordance with prescribed standards.





## SHAKUNTALA HSES CONSULTING SERVICES

HEALTH, SAFETY &  
ENVIRONMENT SUSTAINABILITY

*Integrated Health Safety and  
Environment Sustainability Practices  
that Matter*

SHAKUNTALA HEALTH SAFETY  
ENVIRONMENT SUSTAINABILITY  
CONSULTING SERVICES (A-Unit of  
OPM Industrial Solutions)

Contact Number: +91 9140744836  
Email: shakuntalahsescs@gmail.com

Add: F-39A3, Riico  
Industrial Area,  
Khushkhera, Alwar,  
Rajasthan - 301707